



## SUPPLEMENTARY REGULATIONS

### 1. ANNOUNCEMENT

The **MCE – Motor Clube do Estoril**, on behalf of **FMP- Federação de Motociclismo de Portugal**, Santander Salts Ltd, Championship promoter and the Fédération Internationale de Motocyclisme, organises a race of the FIM Sidecar World Championship.

This event will take place from the **28<sup>th</sup> till 30<sup>th</sup> October 2022** on the **Estoril Circuit**. IMN n°: **105/08**

### 2. ORGANISATION

Address of the Organising Committee:

**MCE -MOTOR CLUBE DO ESTORIL**

Avenida Alfredo César Torres Lojas 1 e 3 2646-901 ALCABIDECHE

Telephone: (+351) 214 606 190

<http://www.mcestoril.pt>

E-mail: [geral@mcestoril.pt](mailto:geral@mcestoril.pt)

The race office will be opened:

Thursday, 27<sup>th</sup> October at 09H00 – 18H00

Friday, 28<sup>th</sup> October at 09H00 – 19H00

Saturday, 29<sup>th</sup> October at 08H00 – 19H00

Sunday, 30<sup>th</sup> October at 08H00 – 18H00

### 3. CIRCUIT

**Estoril Circuit** length is **4,182 km**, the race will be run **clockwise** (see map enclosed).

Number of side cars admitted to practice: **29**

Number of side cars admitted to race: **24**

#### **Starting grid configuration 2-2-2-2**

Cf. Circuit homologation report.

### 4. ACCES TO THE CIRCUIT

The access to the Circuit will be authorised from Thursday 27<sup>th</sup> of October 2022 at 11H00 hours by the main entrance of the Circuit.

After 22:00 it is not possible to enter the paddock until 07:00 next morning.

The positioning of the competitors in the paddock will be subject to prior authorisation from the organization (see map).

It is forbidden to the competitors and users of the Working Paddock and the Support Paddock to fit any metal objects in our asphalt surfaces such as tent pegs, nails, etc.



In the event of a disrespect of these rules, the competitors may be penalised and/or fined.

### **PASSES/ACCREDITATION:**

**The Championship passes are applicable for the event** (see attached).

Each new team registered will get an envelope from the Promoter with **6 pit lane** & **4 paddock** accreditations:

#### Pitlane:

- 1 for the Rider
- 1 for the Passenger
- 4 for the Team Manager, mechanics/team's members

#### Paddock:

- 4 for Team Guests

*Only the riders, passengers or team manager of each team will be able to collect the passes at the Race Office (First floor of the Race Control) for his team upon presentation of an ID or passport.*

*All the other persons (officials/staff/promoters and journalists) holders of pit lane access must personally collect their accreditation at the **Accreditation Center (Under the Grand Stand A)**, upon presentation of an ID or passport.*

### **FACILITIES AND PADDOCK ALLOCATION**

Santander Co-ordinator Gary Bryan T: +44 (0)7542 249837

BSB Paddock Team: +44 (0)7732 467977

The Sidecar Paddock is in General Paddock included pit boxes starting from box 1 up to the box 6. One pit box per two teams will be reserved.

Pit box dimensions are: 17 m length and 6,40 m wide

1 space on Main paddock for truck/caravan

The set up in the support/working paddocks must be approved by the organizer/promoter.

## **5. ENTRIES & DEPOSIT**

### **ENTRIES**

Applications for entry shall be made on the official forms included with these regulations.

Applications shall be approved by the rider' & passenger's FMNs and shall reach the organisers no later than 30 days previous the start of the event.

Following the Art. 1.8.5, Applications for entry shall be made on the official Championship Promoter webpage: <https://www.fim-world-sidecar.com/>

Entry fees: 250 EUR.

Deadline: 30 days previous the start of the event.



The Promoter will select the applications and advise teams within 72 hours after the closing date of entries whether their applications have been accepted for the event.

## **DEPOSITS**

The deposit for transponders (if applicable) is: **Rider licence**

Timekeeping company: **Motor Clube do Estoril**

The transponders' distribution will be done on: Friday 28<sup>th</sup> October from 15H00 hours in timekeeping office on the first floor of Race Control.

The teams are responsible to give back the transponder to the timekeeping office latest 1 hour after the end event.

**In the case of non-return of this equipment, the unreturned item will be the cost of the transponder (800 Euros) will be invoice to the team. Additional administrative costs (shipment, etc.) may also be invoice to the team.**

Live timing & Results pdf available on:

web site – [www. http://circuitoestoril.alkamelsystems.com/](http://circuitoestoril.alkamelsystems.com/)

## **6. OFFICIALS**

- FIM Jury President:	<b>Igor ESKINJA</b>
- FIM Jury member:	<b>Rezsö BULCSU</b>
- FMNR Jury member:	<b>Armando MARQUES</b>
- FIM Technical Director:	<b>Bernd SCHENKHUT</b>
- Head of organisation:	<b>Antonio LIMA</b>
- Clerk of the Course:	<b>Joao Pedro LIMA</b>
- Deputy Clerk of the Course:	<b>Pedro LIMA</b>
- Chief of Track Safety:	<b>Paulo MARTINS</b>
- Chief Medical Officer:	<b>Marcelo VILARES</b>
- Chief Technical Officer:	<b>Ricardo FERREIRA</b>
- Environmental Steward:	<b>Carlota BORGES</b>
- Chief Timekeeper:	<b>Jorge PINTO</b>
- Secretary of the meeting:	<b>Carlos SOARES</b>
- Secretary of the Jury:	<b>Carlota BORGES</b>

Address of Jury members during the meeting:

**ESTORIL CIRCUIT, Jury room, first floor**

## **7. JURISDICTION**

The event will be held in accordance with the:



- **FIM Sidecar World Championships Regulations**
- **FIM Sporting Code and FIM Disciplinary & Arbitration Codes**
- **FIM Medical Code**
- **FIM Anti-Doping Code**
- **FIM Environmental Code**
- **FIM Code of Ethics**

The current FIM Regulations & Codes are available on:

<https://www.fim-moto.com/en/documents>

- **and these Supplementary Regulations.**

Any cases or matters not provided for by the FIM, FMNR regulations or these Supplementary Regulations, will be settled by the FIM International Jury of the meeting.

The Organiser also commits to respect as much as possible the “Green line” charter of good practice.

## **8. SCHEDULE**

As per Art. 1.9 of the FIM Sidecar World Championship Regulations:

### **Administrative checks and technical controls:**

Administrative check: by electronic means

### **Technical controls:**

Friday 28<sup>th</sup> of October 2022, 09H00 -12H00 in Technical Garage 1

No rider or Sidecar is permitted onto the track unless he/it has passed the technical inspections.

### **REMINDER: FIM HOMOLOGATED HELMETS**

The use of FIM Homologated helmets is mandatory for the FIM World Championships and Prizes competitions. Please refer to Art. 2.11.6 & 2.11.7 of the FIM Sidecar World Championship Technical regulations.

### **Riders & passengers Briefing and the Meeting with the Teams/Riders and Passengers:**

All the riders and passengers must attend the compulsory briefing scheduled on Friday 28<sup>th</sup> of October 2022 at 18H30 h in the Media Center, ground floor

**After the compulsory briefing, the FIM invites all Teams/Riders and Passengers to attend an annual meeting regarding the next 2023 FIM Sidecar World Championship season.**

### **Practising:**

It is strictly forbidden to ride racing machines on the course outside the official practice periods.



**Friday, 28.10.2022**

CLASS	TIME	SESSION	DURATION
FIM SIDECAR WCH	14H20 – 14H50	FREE PRACTICE	30 min
FIM SIDECAR WCH	16H25 – 16H45	QUALIFYING PRACTICE 1	20 min
FIM SIDECAR WCH	17H40 – 18H00	QUALIFYING PRACTICE 2	20 min

**Saturday, 29.10.2022**

CLASS	TIME	SESSION	DURATION
FIM SIDECAR WCH	11H50 – 12H00	WARM UP	10 min
FIM SIDECAR WCH	16H20 (sighting lap) <b>Race Start: 16H35</b>	RACE 1	18 LAPS

**Sunday, 30.10.2022**

CLASS	TIME	SESSION	DURATION
FIM SIDECAR WCH	11H50 – 12H00	WARM UP	10 min
FIM SIDECAR WCH	15H45 (sighting lap) <b>Race Start: 16H00</b>	RACE 2	18 LAPS

## 9. PRIZE-GIVING

The post-races podium ceremony will be held on the podium after each Race.

Trophies will be provided by the Organisers as follow

One trophy for each rider and for each passenger of the first three teams classified in each race of the World Championship.

FIM Sidecar World Championship Prize-Giving Ceremony will be held place after the Race 2 Prize-Giving Ceremony.

## 10. PROTESTS

All protests shall be made in accordance with the requirements of the FIM Sidecar World Championship regulations and FIM Disciplinary and Arbitration Code and be accompanied by a cash deposit for:

- Sporting protests of 660 EUR;
- Technical protest 660 EUR, plus 250 EUR or 400 EUR (cf Art. 1.27 of the FIM Sidecar World Championship Regulations).

## 11. FUEL

The used fuel must be in conformity with Article 2.10 of the FIM Sidecar World Championship Regulations.

If fuel is supplied by the nearest at the fuel-station on motorway 5 km from the circuit, it will be also in conformity with Art. 2.10 of the FIM Sidecar World Championship Regulations.



## **12. THIRD PARTY INSURANCE**

By endorsing the application form for entry, the FMN of the rider certifies that the rider is insured in accordance with the FIM requirements.

In conformity with Article 110.1 of the Sporting Code, a third-party insurance in respect of riders covering accidents occurring during the meeting including practices will be the responsibility of the organiser.

This insurance includes a guarantee of EUR 6.000.000,00

The organiser disclaims all responsibility for damage to a machine, its accessories and components arising out of an accident, fire or other cases.

## **13. CANCELLATION OF THE EVENT**

Should circumstances or safety reasons demand it, the meeting of the World Championship could be postponed or cancelled. For this, the organisers nor the FIM cannot be held responsible.

## **14. RENUNCIATION OF ANY RECOURSE AGAINST SPORTING AUTHORITIES**

Apart from the requirements of the FIM Sporting Code, riders and teams by participating renounce all rights of appeal against the organiser, his representatives or agents by arbitration or before a tribunal or any other manner not foreseen by the FIM Sporting Code for any damages for which they could be liable in consequence of all acts or omissions on the part of the organiser, his officials, representatives or agents in the application of these regulations or contributed to or arising out of their actions.

## **15. PARTICIPANTS' EQUIPMENT**

According to article 3.4 of the FIM Statutes & By-Laws, the FIM is the sole owner of all television rights for the World Championships.

An on-board camera (other than the one from the FIM Championship Promoter or permitted by the FIM Administration) is not allowed during the entire event, from the practice sessions until the end of the event. If riders wish to place their own on-board camera, they must contact the Championship Promoter, for approval at: [mikedommett@hotmail.com](mailto:mikedommett@hotmail.com)

The FIM reserves the right to ask the riders for images from their on-board cameras.

## **16. ENVIRONMENTAL MAT**

As per article 4.1 of the FIM Environmental Code of 2022 regarding the protection of the floor, Superside teams must accomplish the usage of an standardized environmental mat.

The Environmental Mat must be composed of an absorbent upper part and an impermeable lower part. The use of an environmental mat protecting the ground (or other effective system for events taking place at circuits with permanent facilities) to prevent soil and water contamination is compulsory:





Wherever work on motorcycles is allowed by the organisers;  
Under all waste oil and fuel containers provided by the organisers;  
At all official refuelling points;  
Under all thermic powered generators and power washers. FIM Sidecar World Championship  
page 7 / 7 The minimum technical data for the mat are:  
Dimensions: Minimum 160 cm X 200 cm

## 17. CODE OF ETHICS

All persons participating or involved in any capacity in an FIM Sports event, or FIM activity, or acting on behalf of the FIM, commits themselves to respect and apply the FIM Ethical Code.

### Appendices:

**Complete Time schedule**  
**Circuit Access Plan**  
**Drawing of the circuit**  
**Pit building & Paddock plan**

**Estoril, 10.10.2022**

The President of the Organising Committee: Antonio LIMA

The Clerk of the Course Approval:

**João Pedro LIMA**

The Secretary of the Meeting:

**Carlos Soares**

FMNR Approval:

**XX/10/2022**

FIM Approval:

**10/10/2022**

Promoter Approval:

**Mike Dommett c/o Roger Body**



## Complete Time schedule

### FRIDAY (28.10.2022)

Time	Event	Session
<b>12H00 – 12H45</b>	<b>TD SIDE CARS</b>	<b>Private</b>
12H50 – 13H10	SESSION CNV SBK, SUPERSTOCK 60 + NG, TLC, NAKED BIKES	Session 1
13H15 – 13H40	GRUPO 1*(CNV SBK+STK 600+ NG +TLC+ TROFÉU NAKED BIKES + COPA MOTOVAL)	Session 1
13H45 – 14H10	GRUPO 2* (PREMOTO3+SSP 300+85GP/MOTO4 + MIR MOTO5)	Session 1
<b>14H20 – 14H50</b>	<b>TD SIDE CARS</b>	<b>Free Practice</b>
14H55 – 15H15	SESSION CNV SBK, SUPERSTOCK 600 + NG, TLC, TROFÉU NAKED BIKES	Session 2
15H20 – 15H45	GRUPO 1*(CNV SBK+STK 600 + NG+TLC+ TROFÉU NAKED BIKES +COPA MOTOVAL)	Session 2
15H50 – 16H15	GRUPO 2* (PREMOTO3+SSP 300+85GP/MOTO4 + MIR MOTO5)	Session 2
<b>16H25 – 16H45</b>	<b>TD SIDE CARS</b>	<b>Qualifying 1</b>
16H50 – 17H10	GRUPO 1*(CNV SBK+STK 600+NG+TLC+ TROFÉU NAKED BIKES+COPA MOTOVAL)	Session 3
17H15 – 17H35	GRUPO 2* (PREMOTO3+SSP 300+85GP/MOTO4 + MIR MOTO5)	Session 3
<b>17H40 – 18H00</b>	<b>TD SIDE CARS</b>	<b>Qualifying 2</b>

### SATURDAY (29.10.2022)

#### FREE PRACTICE

09H00 – 09H25	COPA DUNLOP MOTOVAL
09H30 – 09H50	CNV 85GP/MOTO4 + MIR MOTO5
09H55 – 10H15	CNV PREMOTO3 + CNV SUPERSPORT 300

#### WARM-UP

<b>10H25 – 10H35</b>	<b>SIDE CARS</b>
----------------------	------------------

#### QUALIFYING PRACTICES

10H40 – 11H05	COPA DUNLOP MOTOVAL	Superpole 1
11H10 – 11H20	COPA DUNLOP MOTOVAL	Superpole 2
11H25 – 11H30	COPA DUNLOP MOTOVAL	Superpole 3
11H35 – 12H05	TROFÉU TLC + TROFÉU NAKED BIKES	Session 1
12H10 – 12H40	CNV 85GP/MOTO4 + MIR MOTO5	Session 1
12H45 – 13H15	CNV SUPERBIKE + CNV SUPERSTOCK 600 + NG	Session 1
13H20 – 13H50	CNV PREMOTO3 + CNV SUPERSPORT 300	Session 1

#### RACES

14H05	TROFÉU TLC + TROFÉU NAKED BIKES	10 Laps	Race 1	6 Laps - 2/3
14H40	COPA DUNLOP MOTOVAL	10 Laps	Race 1	6 Laps - 2/3
15H15	CNV 85GP/MOTO4 + MIR MOTO5	10 Laps	Race 1	6 Laps - 2/3
15H50	CNV SUPERBIKE + CNV SUPERSTOCK 600 + NG	15 Laps	Race 1	10 Laps - 2/3
16H35	SIDE CARS	18 Laps	Race 1	11 Laps - 2/3
17H25	CNV PREMOTO3 + CNV SUPERSPORT 300	14 Laps	Race 1	9 Laps - 2/3

### SUNDAY (30.10.2022)

#### WARM-UP

09H00 – 09H20	TROFÉU TLC + TROFÉU NAKED BIKES
<b>11H50 – 12H00</b>	<b>SIDECARS</b>

#### QUALIFYING PRACTICES

09H25 – 09H45	CNV 85GP/MOTO4 + MIR MOTO5	Session 2
09H50 – 10H15	COPA DUNLOP MOTOVAL	Superpole 1
10H20 – 10H30	COPA DUNLOP MOTOVAL	Superpole 2
10H35 – 10H40	COPA DUNLOP MOTOVAL	Superpole 3
10H45 – 11H10	CNV SUPERBIKE + CNV SUPERSTOCK 600 + NG	Session 2
11H15 – 11H40	CNV PREMOTO3 + CNV SUPERSPORT 300	Session 2

#### RACES

12H40	TROFÉU TLC + TROFÉU NAKED BIKES	10 Laps	Race 2	6 Laps - 2/3
13H15	CNV 85GP/MOTO4 + MIR MOTO5	10 Laps	Race 2	6 Laps - 2/3
13H50	COPA DUNLOP MOTOVAL	10 Laps	Race 2	6 Laps - 2/3
14H30	CNV SUPERBIKE + CNV SUPERSTOCK 600 + NG	15 Laps	Race 2	10 Laps - 2/3
15H15	CNV PREMOTO3 + CNV SUPERSPORT 300	14 Laps	Race 2	9 Laps - 2/3
16H00	SIDE CARS	18 Laps	Race 2	11 Laps - 2/3



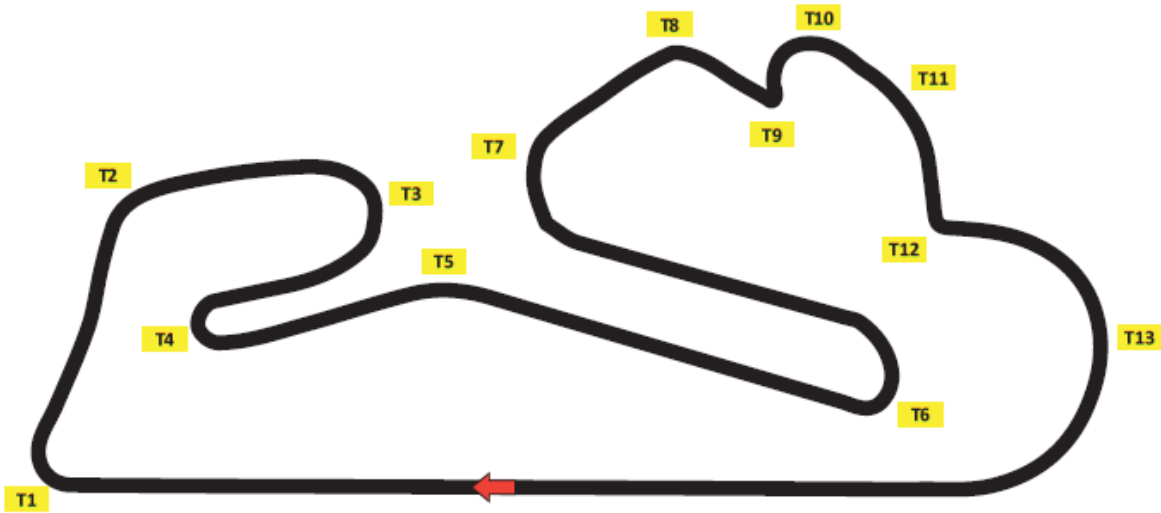


## Circuit Access Plan





## Drawing of the circuit



**TX** Número da Curva / Turn Number

## Pit building & Paddock plan





# **FIM SIDECAR WORLD CHAMPIONSHIP**

---

## **ON BOARD CAMERAS INSTALLATION GUIDE**

## **INTRODUCTION**

This document is intended to provide a guide for the installation and use of On Board cameras in Sidecar competitions.

It describes the proper way to install these cameras so as to guarantee the maximum safety for the drivers and the passengers while obtaining as far as possible the most spectacular shots.

### **Reminder:**

**According to article 3.4 of the FIM Statutes & By-Laws, the FIM is the sole owner of all television rights for the World Championships.**

**Private on-board cameras are not allowed during the FIM Sidecar events. If teams wish to place their own on-board camera, they must contact the Championship Promoter, for previous approval at: [mikedommett@hotmail.com](mailto:mikedommett@hotmail.com)**

**The FIM reserves the right to ask the promoter or the teams for images from their authorised on-board cameras.**



## **IMPORTANT NOTICES**

All the instructions for safety, installation and use contained in this guide should be read thoroughly by all sidecar riders before any On Board camera is installed and operated on their vehicles.

Each sidecar team will at all times be fully responsible for ensuring that any on board camera is correctly installed in accordance with this installation guide.

Please also refer to Art. 3.4 of the Art.1.18 13) and 2.3.12 of the FIM Sidecar World Championship Regulations **and to the Supplementary Regulations of each Championship rounds.**

**AREAS OF INTEREST FOR THE INSTALLATION**



DESCRIPTION

N°	VIEW	DESCRIPTION
1	Reverse	Main Position. Front view of the rider and passenger and partial fairing
2	Reverse	Front view of the passenger (left turns)
3	Front	Front view of partial fairing and track
4	Front	Front view of track
5	Reverse	Front view of rider and passenger (right turns)
6	Reverse & Front	Front view of passenger (right turns) or front view of riders and partial fairing





## **INSTALLATION RECOMENDATIONS**

The installation of two (2) On Board camera units **max.** per sidecar **can be authorized by the FIM TV Department upon previous writing requests.**

One On Board camera is composed of Two (2) parts: the support (bracket) and the camera.

The support shall be installed by a representative of the sidecar team (e.g. the rider) **and checked by a technical official during the pre-event technical controls.** The latter's role shall be limited **to verify that the installation has been made according to this guide.**

The sidecar team member **is at all time** solely responsible for the installation of the support.

The On Board cameras shall be installed when the fairing is assembled on the chassis. Sometimes, depending on the sidecar camera position, it may be necessary to install the support before the fairing has been assembled and then assemble the fairing.

To attach the support, a small hole must be drilled in the sidecar fairing for the support of the On Board camera to be attached as shown. Washers shall be used to adjust and fix the support units.

Holes may be drilled only with the express agreement of the sidecar team and using their own tools and bores.

The support of the On Board camera shall be placed over the hole using the proper screws. It shall then remain affixed to the sidecar after the race in order to be used in the next races/events.

The assembly shall be duly checked before each race in the presence of one sidecar team member.

Once the support of the On Board camera unit has been affixed to the fairing, **the team member responsible (e.g. the rider)** shall install the On Board camera before the start of the race in order to obtain the right frame.

Each sidecar team will at all times be fully responsible for ensuring that any on board camera is correctly installed in accordance with this installation guide.

The cameras **may** be switched on during the Starting Grid.

A proper first installation of one (1) On Board camera unit requires approximately 45 minutes.

The support shall be installed during or the day prior to the qualifying sessions and before the sidecars enter the Parc Fermé.

**Once** installed, the support(s) will remain affixed to the sidecars. However, it will still be necessary to check the supports before each day of racing **by the event officials.**



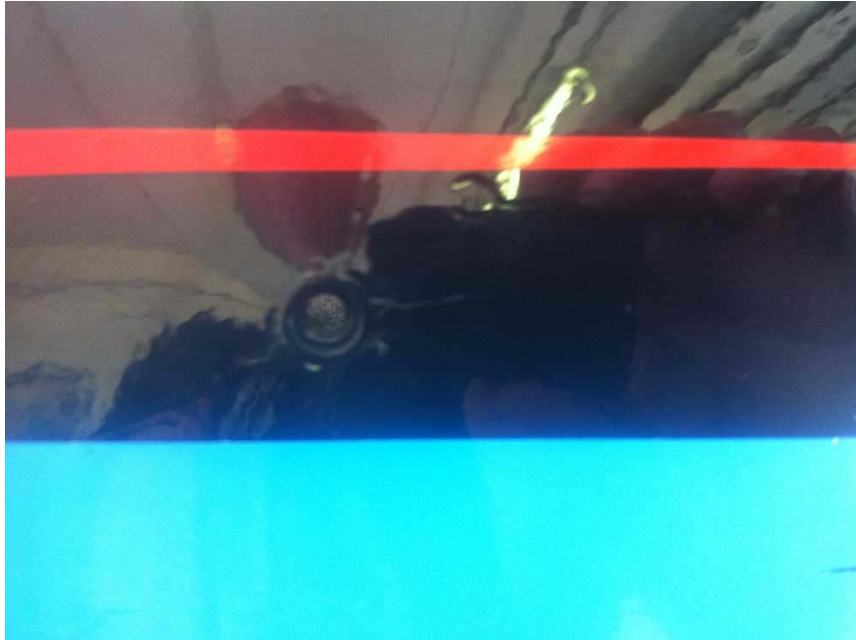
**INSTALLATION PROCEDURES**

1



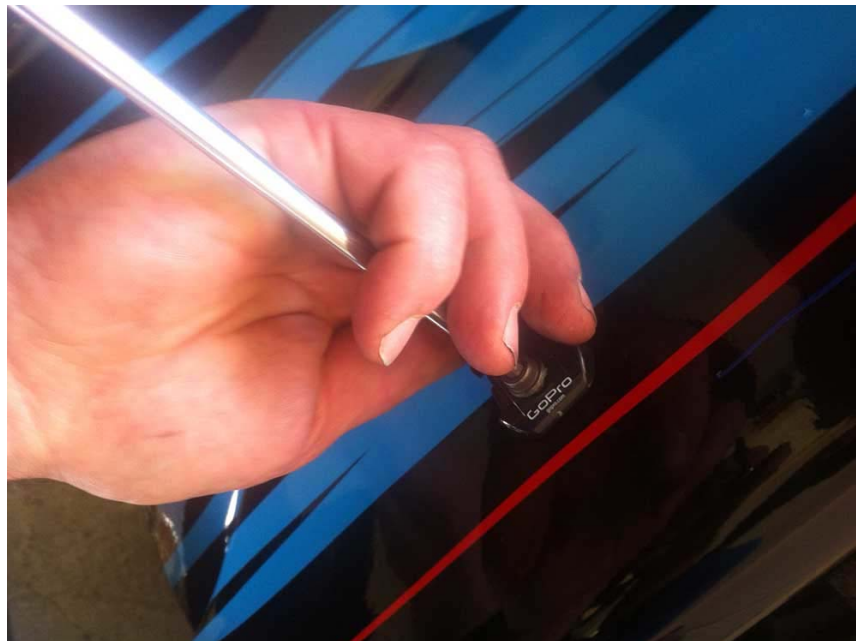
Support

2



Hole in the fairing

3



Fixing of support in the fairing

4



Adjusting the support

5



First framing check

6



Support ready for the race

7



Remaining support on the fairing between races