



## SUPPLEMENTARY REGULATIONS

### 1. ANNOUNCEMENT

The **Pannónia-Racing Kft.**, on behalf of MAMS, **Santander Salts Ltd, Championship promoter** and the Fédération Internationale de Motocyclisme, organises a race of the FIM Sidecar World Championship.

This event will take place from the 25th till 27th June 2021. on the Pannónia-Ring. IMN n°: 105/03

### 2. ORGANISATION

Pannonia Racing Kft.  
H-9512 Ostffyasszonyfa hrsz.0179.  
Hungary/ Magyarország  
Tel: +0036/95/394 300

email: [office@pannonia-ring.com](mailto:office@pannonia-ring.com) / [info@pannonia-ring.com](mailto:info@pannonia-ring.com)

### 3. CIRCUIT

**Pannónia-Ring** length is 4,740 km, the race will be run **clockwise** (see map enclosed).

Number of side cars admitted to practice: 30

Number of side cars admitted to race: 25

Cf. Circuit homologation report.

### ACCES TO THE CIRCUIT

The access to the Circuit will be authorised from 24<sup>th</sup> June 2021 from 08:00 a.m by the main entrance of the Circuit.

The positioning of the competitors in the paddock will be subject to prior authorisation from the organization (see map).

It is forbidden to the competitors and users of the Working Paddock and the Support Paddock to fit any metal objects in our asphalt surfaces such as tent pegs, nails...

In the event of a disrespect of these rules, the competitors may be penalised and/or fined.



## SUPPLEMENTARY REGULATIONS

### **FACILITIES AND PADDOCK ALLOCATION**

The Sidecar Paddock / Pit allocation information: Pannónia-Racing Kft.

Allocation of facilities contact person: Circuit director

Mr. Sándor Kiss e-mail: office@pannonia-ring.com

On the circuit the followings are available for the teams:

- 5 pit boxes and 5 paddock boxes (**see enclosed map**)
- space on support in the support paddock for truck/caravane (**see enclosed map**)

The set up in the support/working paddocks must be approved by the organizer/promoter.

### **5. ENTRIES & DEPOSIT**

Applications for entry shall be made on the official forms included with these regulations.

Applications shall be approved by the rider' & passenger's FMNs and shall reach the **organisers** no later than 30 days previous the start of the event.

Following the Art. 1.8.5, **Applications for entry shall be made on the official Championship Promoter webpage: <https://www.fim-world-sidecar.com/>**

**Entry fees: 500EUR.**

**Deadline: 30 days previous the start of the event.**

**The Promoter will select the applications and advise teams within 72 hours after the closing date of entries whether their applications have been accepted for the event.**

### **PASSES/ACCREDITATION**

**Each team will get an envelope with:**

**6 pit lane accreditations with photo per team:**

- 1 for the Rider
- 1 for the Passenger
- 4 for the Team Manager, mechanics/team's members

**4 paddock accreditations with photo for guests**



## SUPPLEMENTARY REGULATIONS

**Only the riders, passengers or team manager of each team will be able to collect the passes for his team upon presentation of an ID or passport.**

**All the other persons (officials/staff/ promoters and journalists) holders of pit lane access must personally collect their accreditation at the Promoter, upon presentation of an ID or passport.**

**For further information please contact: Mike Dommett  
mikedommett@hotmail.com**

### **DEPOSITS**

The deposit for organiser's transponders is for: **50 €**

Distributed on: Friday (25.06.2021.) from 8:00 (Race Office)

Live timing: [https://www.pannonia-ring.com/index.php?popup=0&id=73&language=hu\\_HU](https://www.pannonia-ring.com/index.php?popup=0&id=73&language=hu_HU)

### **6. OFFICIALS**

- |                                  |                     |
|----------------------------------|---------------------|
| - FIM Jury President:            | <b>Igor Eskinja</b> |
| - FIM Jury member:               | <b>Rezső Bulcsu</b> |
| - FMNR Jury member:              | <b>Péter Bakó</b>   |
| - FIM Technical Director:        | Bernd Schenkhut     |
| - <b>Promoter representative</b> | <b>Roger Body</b>   |
| - Head of organisation:          | Sándor Kiss         |
| - Clerk of the Course:           | Péter Hajba         |
| - Chief of Track Safety:         | Gyöngyi Szabó       |
| - Chief Medical Officer:         | Ádám Radványi       |
| - Chief Technical Officer:       | Gábor Farkas        |
| - Environmental Steward:         | Péter Bakó          |
| - Chief Timekeeper:              | György Lakatos      |
| <br>                             |                     |
| - Secretary of the meeting:      | TBA                 |

Address of Jury members during the meeting:

Pannónia-Ring Circuit / Control Tower –Second floor



## SUPPLEMENTARY REGULATIONS

### 7. JURISDICTION

The event will be held in accordance with the:

- **FIM Sidecar World Championships Regulations**
- **FIM Sporting Code and FIM Disciplinary & Arbitration Codes**
- **FIM Medical Code**
- **FIM Anti-Doping Code**
- **FIM Environmental Code**
- **FIM Code of Ethics**

The current FIM Regulations & Codes are available on: <https://www.fim-moto.com/en/documents>

- **and these Supplementary Regulations.**

Any cases or matters not provided for by the FIM, FMNR regulations or these Supplementary Regulations, will be settled by the FIM International Jury of the meeting. Any cases or matters not provided for by the FIM, FMNR regulations or these Supplementary Regulations, will be settled by the FIM International Jury of the meeting.

The Organiser also commits to respect as much as possible the “Green line” charter of good practice.

### 8. SCHEDULE

As per Art. 1.9 of the FIM Sidecar World Championship Regulations:

**Friday (25.June.2021.)**

- **Administrative checks:** **08:00 – 08:30 (Race Office by Promoter)**

- **Technical controls:** **09:00 - 11.00 (see attached map)**

No rider or Sidecar is permitted onto the track unless he/it has passed the technical inspections.

#### **REMINDER: FIM HOMOLOGATED HELMETS**

From 2020, the use of FIM Homologated helmets is mandatory for the FIM World Championships and prizes competitions. Please refer to Art. 2.11.6 & 2.11.7 of the FIM Sidecar World Championship Technical regulations.

- **Riders & passengers Briefing:** Friday (25 June 2021. 08:30 a.m.) at Briefing Room



## SUPPLEMENTARY REGULATIONS

All the riders and passengers must attend the compulsory briefing scheduled refer to time schedule.

### - **Practising:**

It is strictly forbidden to ride racing machines on the course outside the official practice periods.

### **Friday (25.06.2021.)**

- 11:30 - 12:00 a.m.: I. Free practice  
15:30 – 16:00 p.m.: II. Free Practice

### **Saturday (26.06.2021.)**

- 08:05 – 08:30: Qualifying session 1  
11:40 – 12:05: Qualifying session 2

### **Races:**

### **Saturday (26.06.2021.)**

- 14:45 – 15:35: Race 1 (15 laps – 71,1 km)

### **Sunday (27.06.2021.)**

- 08:10 – 08:30: Warm Up  
11:05 – 12:05: Race 2 (15 laps – 71,1 km)

Complete schedule enclosed.

## **9. PRIZE-GIVING**

At the victory podium, after both races

Trophies will be provided by the organiser, 2 trophies per teams: one for each, rider & passenger.

## **10. PROTESTS**

All protests shall be made in accordance with the requirements of the FIM Disciplinary and Arbitration Code and be accompanied by a fee of 660,00 €.



## SUPPLEMENTARY REGULATIONS

### 11. FUEL

If fuel is not supplied by the organisers. The used fuel must be in conformity with Article 2.10 of the Road Racing Sidecar World Championship Regulations.

### 12. THIRD PARTY INSURANCE

By endorsing the application form for entry the FMN of the rider certifies that the rider is insured in accordance with the FIM requirements.

In conformity with Article 110.1 of the Sporting Code, third party insurance in respect of riders covering accidents occurring during the meeting including practices will be the responsibility of the organiser.

This insurance includes a guarantee of **EUR 120.000,00**.

The organiser disclaims all responsibility for damage to a machine, its accessories and components arising out of an accident, fire or other cases.

### 13. RENUNCIATION OF ANY RECOURSE AGAINST SPORTING AUTHORITIES

Apart from the requirements of the FIM Sporting Code, riders and teams by participating renounce all rights of appeal against the organiser, his representatives or agents by arbitration or before a tribunal or any other manner not foreseen by the FIM Sporting Code for any damages for which they could be liable in consequence of all acts or omissions on the part of the organiser, his officials, representatives or agents in the application of these regulations or contributed to or arising out of their actions.

### 14. RIDER'S EQUIPMENT

According to article 3.4 of the FIM Statutes & By-Laws, the FIM is the sole owner of all television rights for the World Championships.

An on-board camera (other than the one from the FIM Championship Promoter or permitted by the FIM Administration) is not allowed during the entire event, from the practice sessions until the end of the event. If riders wish to place their own on-board camera, they must contact the **Championship Promoter, for approval at: [mikedommett@hotmail.com](mailto:mikedommett@hotmail.com)**

(see appendix - Onboard camera installation guide) The FIM reserves the right to ask the riders for images from their on-board cameras.



## SUPPLEMENTARY REGULATIONS

### 15. ENVIRONMENTAL MAT

As per article 4.1 of the FIM Environmental Code of 2018 regarding the protection of the floor, Superside teams must accomplish the usage of an standardized environmental mat.

The Environmental Mat must be composed of an absorbent upper part and an impermeable lower part. The use of an environmental mat protecting the ground (or other effective system for events taking place at circuits with permanent facilities) to prevent soil and water contamination is compulsory:

- a) Wherever work on motorcycles is allowed by the organisers;
- b) Under all waste oil and fuel containers provided by the organisers;
- c) At all official refuelling points;
- d) Under all thermic powered generators and power washers. FIM Sidecar World Championship page 7 / 7 The minimum technical data for the mat are:
  - Dimensions: Minimum 160 cm X 100 cm

Any infraction of this rule will be reported to the International Jury who will fine the rider responsible a maximum of EUR 370.- or any other amount mentioned in the regulation or appendix of the discipline. Other sanctions can be pronounced by the International Jury in accordance with the competences mentioned in Article 3.1.3 of the Disciplinary and Arbitration Code (DAC) and Article 50.1.3 of the Sporting Code.

### 16. HEALTH PROTOCOL (2021)

**A sanitary protocol is force in all FIM World Championship events with regards to the Covid-19 sanitary crisis.**

- **Wear a protective mask properly in the paddock**
- **Wash your hands frequently with soap**
- **Use hydroalcoholic gel**
- **Avoid touching your eyes, mouth or nose.**
- **Avoid crowded places**
- **When possible maintain a safe distance of 2 meters**
- **Clean the items you have used or you are going to share**
- **Avoid handshakes, hugs and sharing bottles and glasses with others**
- **If you have symptoms contact immediately the CMO in charge**

**All persons participating in the event and entering the circuit must comply with it.**

**Any breach by a person belonging to a competitor's organization may be the subject of a report from the organizer to the sports authorities in addition to possible legal proceedings.**



## SUPPLEMENTARY REGULATIONS

### To enter Hungary:

As a general rule, it is not possible to enter Hungary, but according to Chapter 7, competitors, sports professionals and participants in sports events are exceptions to this.

These persons are:

- a) a participant of an international sporting event held on the territory of Hungary, excluding the spectator,
- b) a person holding a letter of invitation issued by the official organizer of a sports event to be held in Hungary,
- c) at the invitation of a Hungarian sports organization or national sport federation
  - ca) a competitor with a valid licence,
  - cb) a sports professional;
  - cc) a person involved in the organization of a sporting event

According to the amendment of Government Decree 408/2020, effective from 5 September, these persons may enter the territory of Hungary if, within 3 days prior to entry, the results of a single SARS-CoV-2 PCR test - performed in Hungarian or English, a certificate issued in their name confirms that SARS-CoV-2 coronavirus was not detectable in their body at the time of the study.

So, participants of a sport event organized in Hungary, can enter with 1 negative test, not older than 3 days prior the entry.

### Enclosures:

- Detailed Time Schedule
- Drawing of the circuit
- Paddock plan
- Onboard camera installation guide

Place & Date: Ostffyasszonyfa, 18.05.2021.





## SUPPLEMENTARY REGULATIONS

The President of the Organising Committee: Mr. Sándor Kiss

The Clerk of the Course:	Péter Hajba
The Chief of Track Safety:	Gyöngyi Szabó
The Secretary of the Meeting:	TBA

FMNR Approval: (Acronym)	Andrea Zólyomi dd/mm/yy
-----------------------------	----------------------------

FIM Approval_v4:	Victoria Corredoira 15/06/21
------------------	---------------------------------

Promoter Approval:	Roger Body dd/mm/yy
--------------------	------------------------



## SUPPLEMENTARY REGULATIONS

**FIM Sidecar World Championship 2021, Round 2  
25-27 June 2021 Pannonia-Ring, Hungary IMN: 105/03**

### Time Schedule

#### **24. June 2021 (Thursday):**

The Paddock will be opened for participants at 08,00.

#### **25. June (Friday):**

- 08,00                    Administrative Checks and Transponder Distributing:  
In the tower, groundfloor- Race Office
- 08,30                    All the riders and passengers must attend the compulsory  
briefing in the Briefing Room (yellow Hotel B, 2nd floor)
- 09,00 – 11,00        Technical Inspection:  
at Sidecar Parc Ferme area.
- 11,30 – 12,00        Free Practice 1
- 15,30 – 16,00        Free Practice 2

#### **26. June (Saturday):**

- 08,05 – 08,30        QualifyingPractice 1
- 11,40 – 12,05        QualifyingPractice 2
- 14,45                    Race 1. (15 laps, 71,1 km)**

#### **27. June (Sunday):**

- 08,10 – 08,30        Warm-up
- 11,05                    Race 2. (15 laps, 71,1 km)**

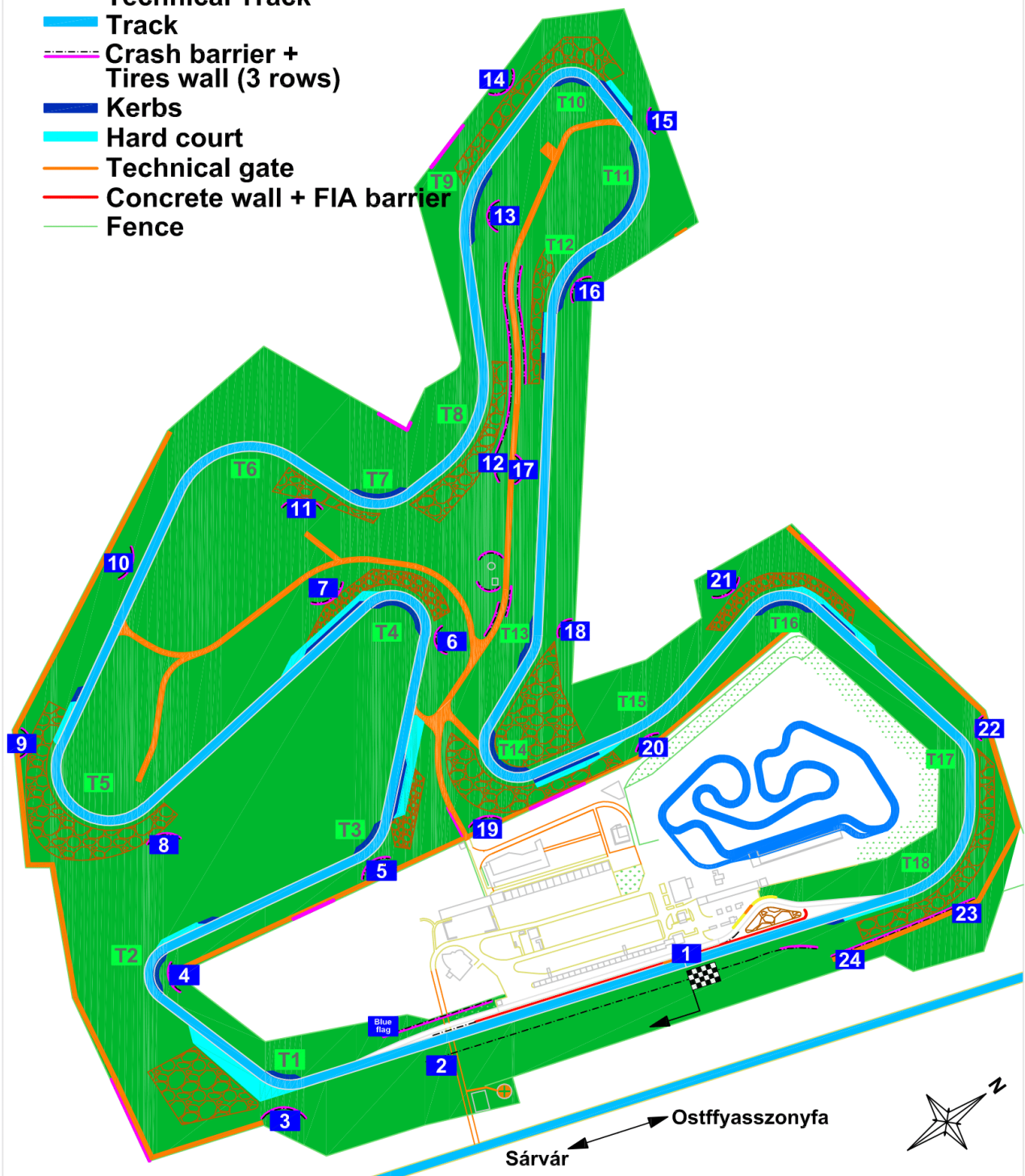


# SUPPLEMENTARY REGULATIONS

Total Length: 4740 M  
Breadth: 11 - 13 M  
Straight: 700 M

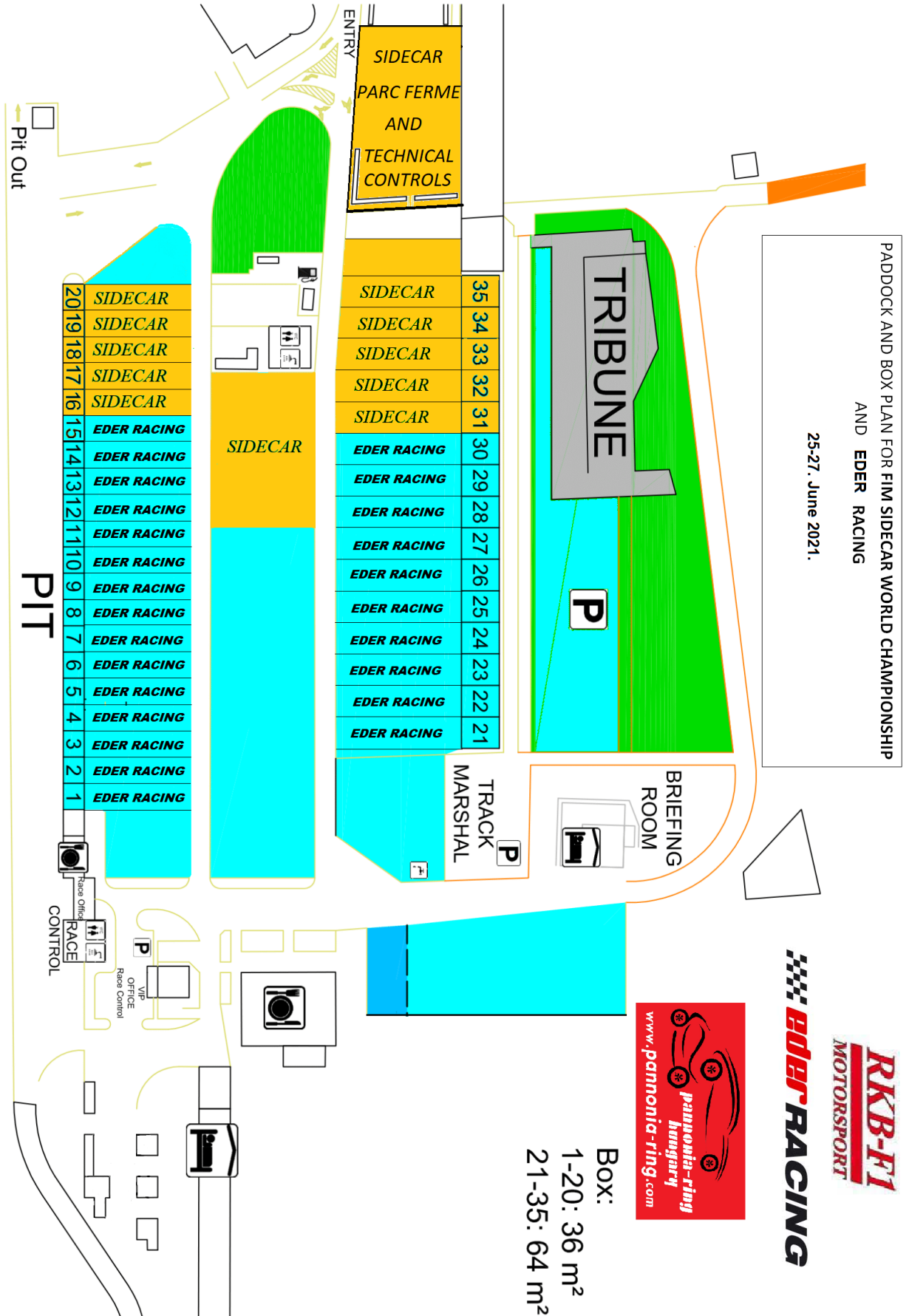
- 14 Flagmarshal Post
- T9 Turn Number
- Gravel bed
- Technical Track
- Track
- Crash barrier + Tires wall (3 rows)
- Kerbs
- Hard court
- Technical gate
- Concrete wall + FIA barrier
- Fence

**Pannónia Racing Kft.**  
 9512 OSTFFYASSZONYFA, 0179 hrsz. - Tel.: (00-36)95/394-300  
 www.pannonia-ring.com office@pannonia-ring.com





# SUPPLEMENTARY REGULATIONS





# **FIM SIDECAR WORLD CHAMPIONSHIP**

---

## **ON BOARD CAMERAS INSTALLATION GUIDE**

## **INTRODUCTION**

This document is intended to provide a guide for the installation and use of On Board cameras in Sidecar competitions.

It describes the proper way to install these cameras so as to guarantee the maximum safety for the drivers and the passengers while obtaining as far as possible the most spectacular shots.

### **Reminder:**

**According to article 3.4 of the FIM Statutes & By-Laws, the FIM is the sole owner of all television rights for the World Championships.**

**Private on-board cameras are not allowed during the FIM Sidecar events. If teams wish to place their own on-board camera, they must contact the Championship Promoter, for previous approval at: [mikedommett@hotmail.com](mailto:mikedommett@hotmail.com)**

**The FIM reserves the right to ask the promoter or the teams for images from their authorised on-board cameras.**



## **IMPORTANT NOTICES**

All the instructions for safety, installation and use contained in this guide should be read thoroughly by all sidecar riders before any On Board camera is installed and operated on their vehicles.

Each sidecar team will at all times be fully responsible for ensuring that any on board camera is correctly installed in accordance with this installation guide.

Please also refer to Art. 3.4 of the Art.1.18 13) and 2.3.12 of the FIM Sidecar World Championship Regulations **and to the Supplementary Regulations of each Championship rounds.**

**AREAS OF INTEREST FOR THE INSTALLATION**



DESCRIPTION

N°	VIEW	DESCRIPTION
1	Reverse	Main Position. Front view of the rider and passenger and partial fairing
2	Reverse	Front view of the passenger (left turns)
3	Front	Front view of partial fairing and track
4	Front	Front view of track
5	Reverse	Front view of rider and passenger (right turns)
6	Reverse & Front	Front view of passenger (right turns) or front view of riders and partial fairing



## **INSTALLATION RECOMENDATIONS**

The installation of two (2) On Board camera units **max.** per sidecar **can be authorized by the FIM TV Department upon previous writing requests.**

One On Board camera is composed of Two (2) parts: the support (bracket) and the camera.

The support shall be installed by a representative of the sidecar team (e.g. the rider) **and checked by a technical official during the pre-event technical controls.** The latter's role shall be limited **to verify that the installation has been made according to this guide.**

The sidecar team member **is at all time** solely responsible for the installation of the support.

The On Board cameras shall be installed when the fairing is assembled on the chassis. Sometimes, depending on the sidecar camera position, it may be necessary to install the support before the fairing has been assembled and then assemble the fairing.

To attach the support, a small hole must be drilled in the sidecar fairing for the support of the On Board camera to be attached as shown. Washers shall be used to adjust and fix the support units.

Holes may be drilled only with the express agreement of the sidecar team and using their own tools and bores.

The support of the On Board camera shall be placed over the hole using the proper screws. It shall then remain affixed to the sidecar after the race in order to be used in the next races/events.

The assembly shall be duly checked before each race in the presence of one sidecar team member.

Once the support of the On Board camera unit has been affixed to the fairing, **the team member responsible (e.g. the rider)** shall install the On Board camera before the start of the race in order to obtain the right frame.

Each sidecar team will at all times be fully responsible for ensuring that any on board camera is correctly installed in accordance with this installation guide.

The cameras **may** be switched on during the Starting Grid.

A proper first installation of one (1) On Board camera unit requires approximately 45 minutes.

The support shall be installed during or the day prior to the qualifying sessions and before the sidecars enter the Parc Fermé.

**Once** installed, the support(s) will remain affixed to the sidecars. However, it will still be necessary to check the supports before each day of racing **by the event officials.**



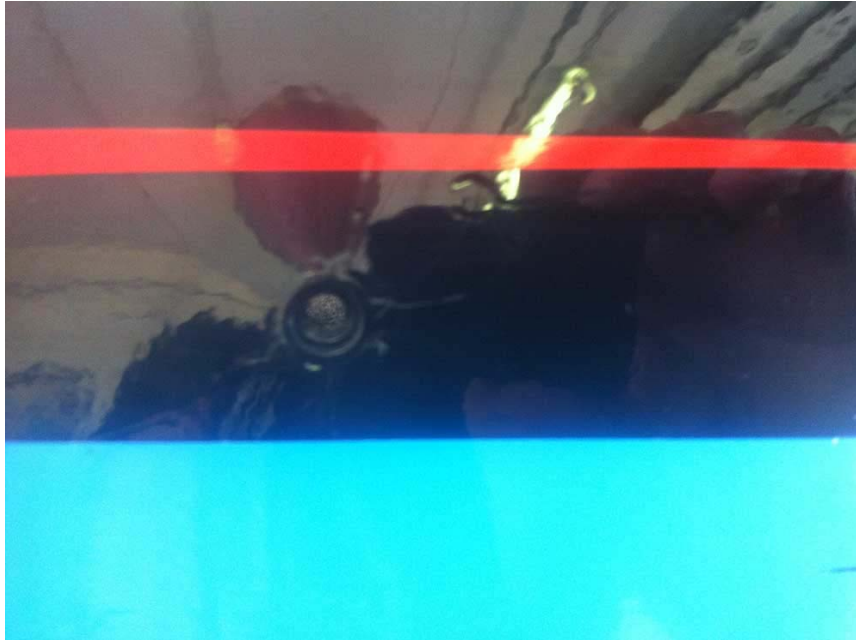
**INSTALLATION PROCEDURES**

1



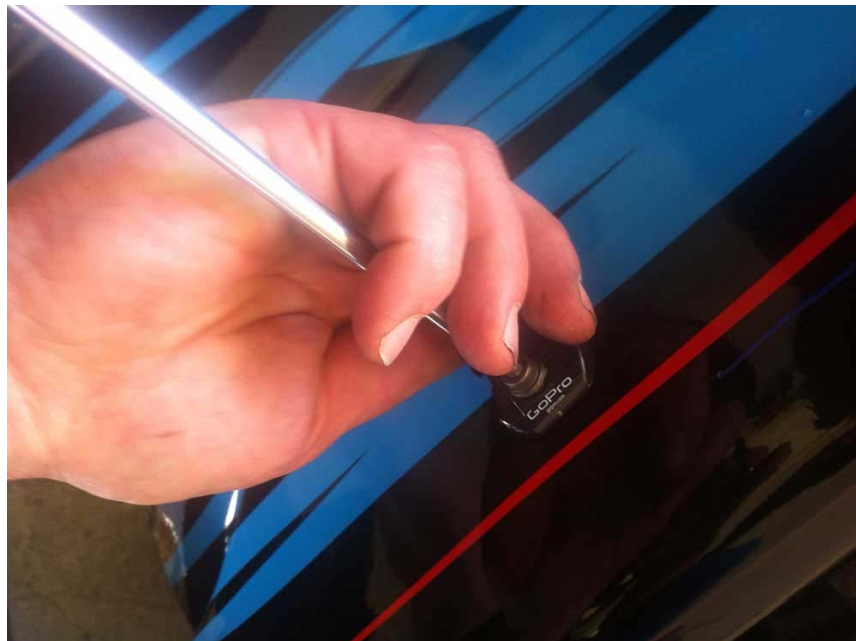
Support

2



Hole in the fairing

3



Fixing of support in the fairing

4



Adjusting the support

5



First framing check

6



Support ready for the race

7



Remaining support on the fairing between races